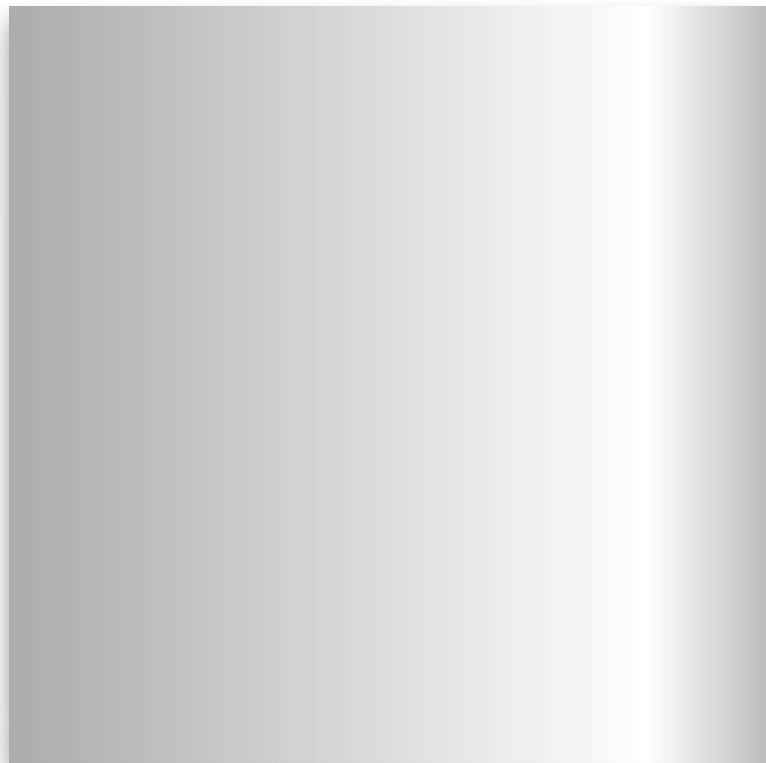


METAL GROUP 0 | METAL GRUPO 0 | METAL GRUPO 0



POLISHED STAINLESS STEEL

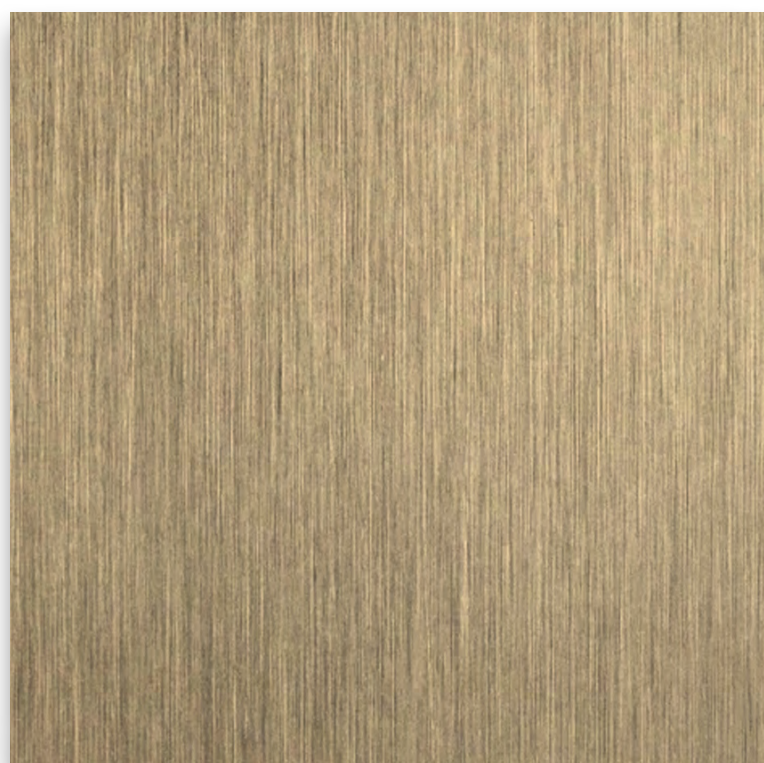


BRUSHED STAINLESS STEEL

METAL GROUP I | METAL GRUPO I | METAL GRUPO I



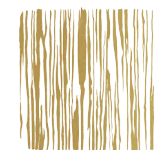
SMOKE BRASS



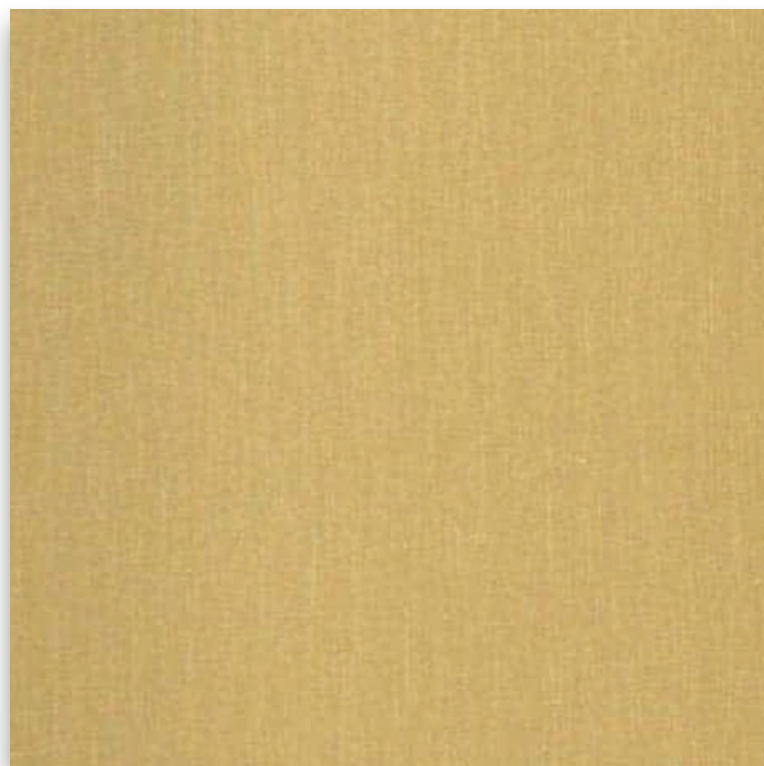
BRUSHED BRASS



ANTIK BRASS



M01



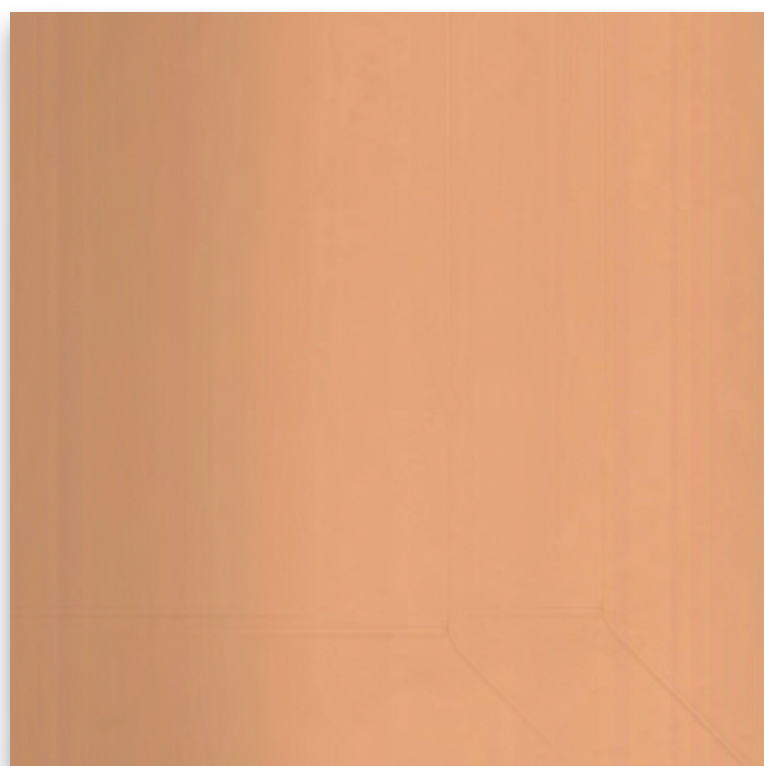
M02



M03



M04



M05